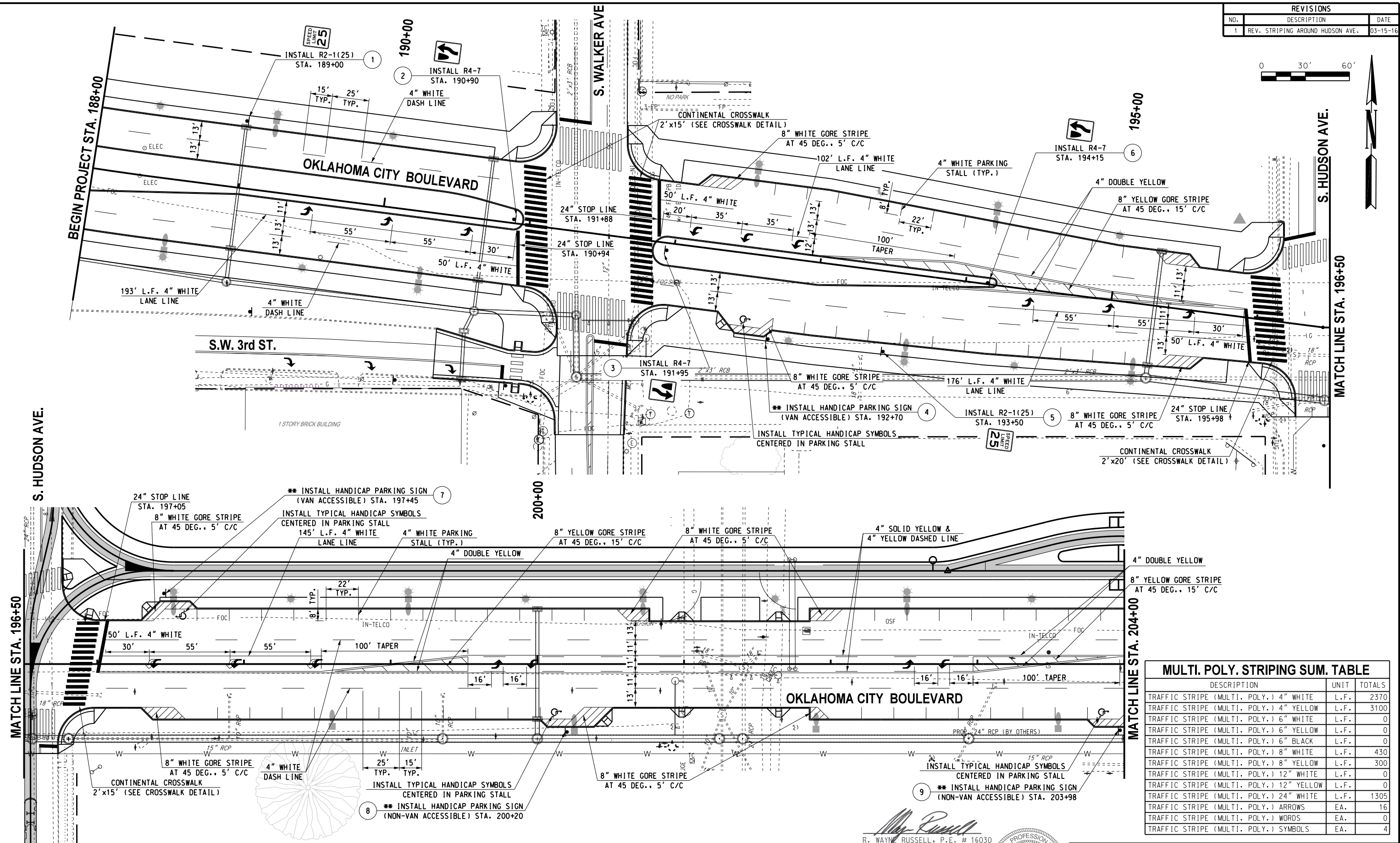
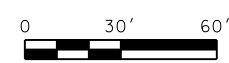


REVISIONS		
NO.	DESCRIPTION	DATE
1	REV. STRIPING AROUND HUDSON AVE.	03-15-16

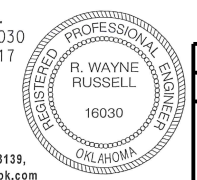


MULTI. POLY. STRIPING SUM. TABLE		
DESCRIPTION	UNIT	TOTALS
TRAFFIC STRIPE (MULTI. POLY.) 4" WHITE	L.F.	2370
TRAFFIC STRIPE (MULTI. POLY.) 4" YELLOW	L.F.	3100
TRAFFIC STRIPE (MULTI. POLY.) 6" WHITE	L.F.	0
TRAFFIC STRIPE (MULTI. POLY.) 6" YELLOW	L.F.	0
TRAFFIC STRIPE (MULTI. POLY.) 6" BLACK	L.F.	0
TRAFFIC STRIPE (MULTI. POLY.) 8" WHITE	L.F.	430
TRAFFIC STRIPE (MULTI. POLY.) 8" YELLOW	L.F.	300
TRAFFIC STRIPE (MULTI. POLY.) 12" WHITE	L.F.	0
TRAFFIC STRIPE (MULTI. POLY.) 12" YELLOW	L.F.	0
TRAFFIC STRIPE (MULTI. POLY.) 24" WHITE	L.F.	1305
TRAFFIC STRIPE (MULTI. POLY.) ARROWS	EA.	16
TRAFFIC STRIPE (MULTI. POLY.) WORDS	EA.	0
TRAFFIC STRIPE (MULTI. POLY.) SYMBOLS	EA.	4

** - TYPE OF HANDICAP SIGN TO BE DETERMINED BY THE CITY OF OKLAHOMA CITY TRAFFIC MANAGEMENT DIVISION. SIGNS TO BE R7-8(MOD) OR R7-108(MOD) WITH A SEPARATE R7-8P IF VAN ACCESSIBLE (AS SPECIFIED ON THE PLAN SHEET).

R. Wayne Russell
 R. WAYNE RUSSELL, P.E. # 16030
 C.A. # 1160, RENEWAL 06-30-17

11-13-15
 DATE



Design	RWR	03-15-16
Drawn	SB	03-15-16



SIGNING & STRIPING PLAN
OKLAHOMA CITY BOULEVARD
 (1 OF 2)
 State Job No. 17428(89) Sheet No. 112

03-15-16 G:\0\Projects\17428 Downtown Blvd WP 5.C Task 6\CAD\STRIPING BOULEVARD.IREV.dgn